

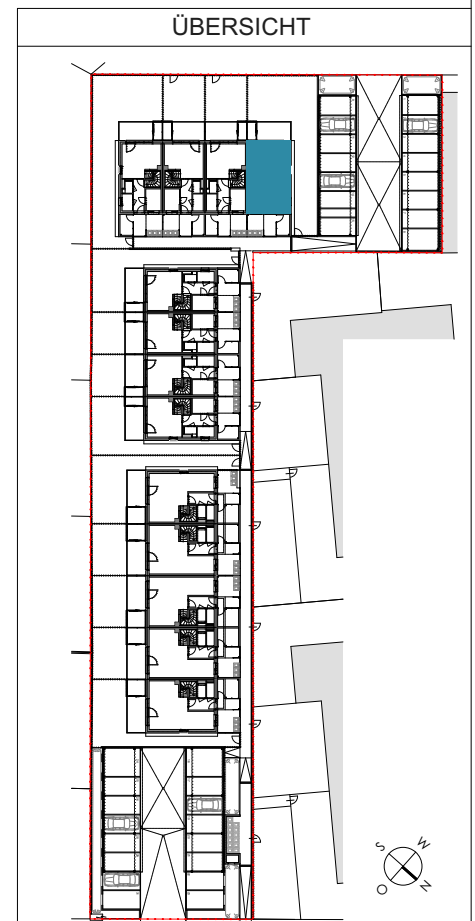
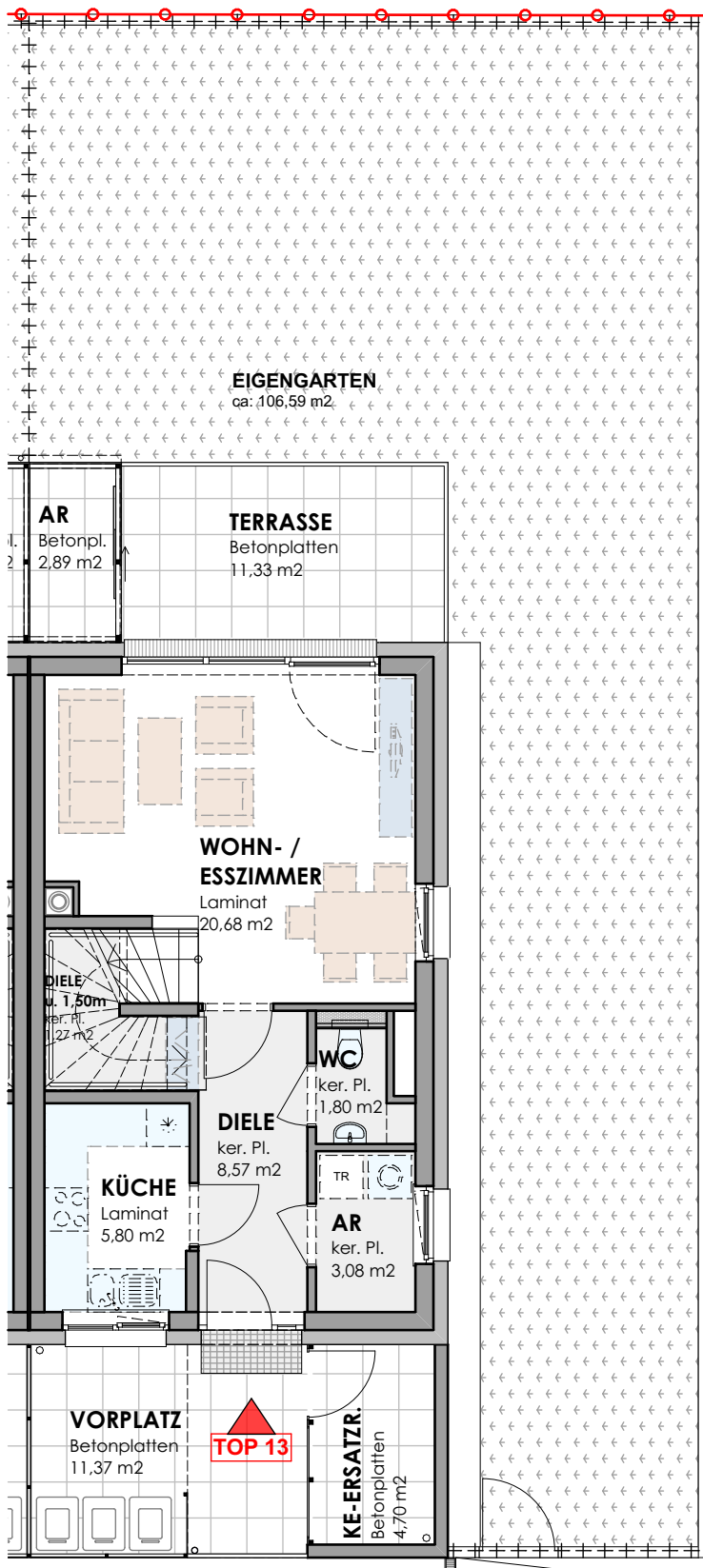
# REIHENHAUSANLAGE STEINBRUNN AM STURZ

## TOP 13

ERDGESCHOSS



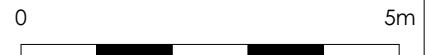
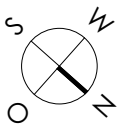
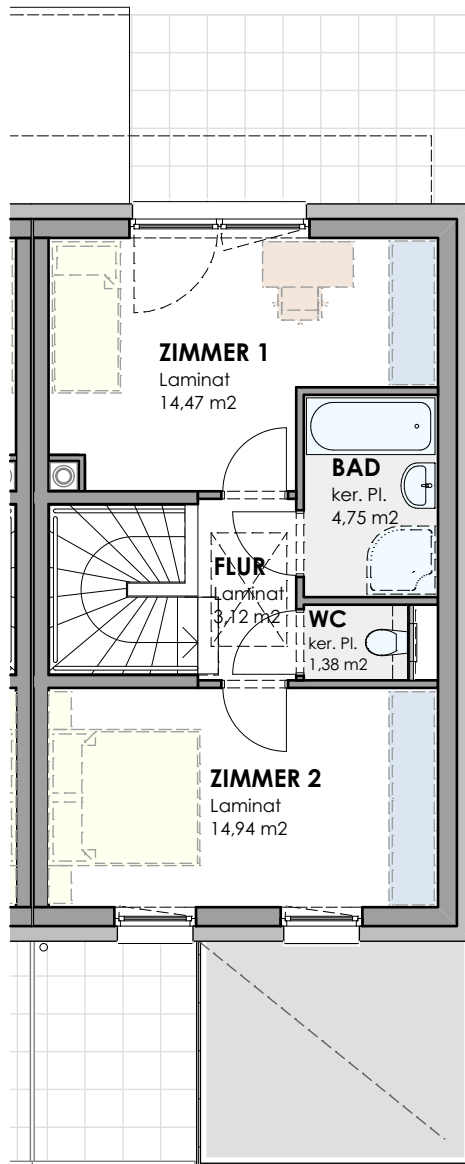
WOHNNUTZFLÄCHE	78,65 m <sup>2</sup>
(WNFL EG)	(40,02 m <sup>2</sup> )
(WNFL OG)	(38,63 m <sup>2</sup> )
TERRASSE	11,33 m <sup>2</sup>
KELLERERSATZRAUM	4,70 m <sup>2</sup>
VORPLATZ	11,37 m <sup>2</sup>
GARTEN	ca. 106,59 m <sup>2</sup>
AR GARTENGERÄTE	2,89 m <sup>2</sup>



# REIHENHAUSANLAGE STEINBRUNN AM STURZ

## TOP 13

OBERGESCHOSS



### ÜBERSICHT

